

PRODUCTIVITY

RELIABLE

SOLUTION



**PRODUCTIVITY
ELEMENTS**

**PRODUCT
OVERVIEW**



PRs VERSE

PRs Verse, Satara, Maharashtra - 415011

ABOUT PRS VERSE

PRS Verse is a technology oriented universal industry, serves a wide range of products with legacy of more than 45 years in industries as a leader in engineered product development. PRS Verse core business segments are productivity, rotary products, safety product, special fasteners, special products and providing services to customers with a single-window solution from design, manufacturing, testing, quality control and techno-commercial services. Located in Western India with a team of distribution partners and technical support specialists.

VISION

To be an organisation to create consistent value at market place by ownership & commitment to every business activity.

MISSION

Legacy of 45 years at market place with innovative product range of productivity, rotary, safety and special products.

Quality

Quality policy of PRS Verse is to build & improve confidence of the customer by providing quality products & quality services to meet customer requirements.

Warranty Clause

PRS VERSE warrants the products, for a period of 2 years from the date of original delivery & 12 months from date of installation whichever is earlier, its products are free from defects in material & workmanship. PRS Verse obligation under this warranty is limited to repair or replacement at its factory of any part or parts of the said products which shall be returned to PRS Verse with paid transport charges & which PRS Verse examination shall disclose to its satisfaction to have been defective. Under no circumstances shall PRS Verse be held liable for loss, damage, cost of repair of consequential damages of any kind in connection with the sale.

Note : Due to continuous innovation & development dimensions, prices & other information may change.

PRODUCTIVITY ELEMENTS

Productivity elements are mechanical devices designed to hold, secure, or fix a workpiece, tool, or equipment in place during industrial processes such as machining, moulding, assembly, or testing. Productivity elements are essential in ensuring that materials or components remain stable and in the correct position through out the operation, contributing to precision, efficiency and safety in the manufacturing process.

Why productivity elements required?

To increase productivity and reduce rejection rates. Productivity elements are known for the fixing of a workpiece or tools with which a workpiece can then be machined. The Productivity elements clamp the workpiece rigidly in place, i.e. as vibration-free as possible without deforming it. The setup allow for high repeatability, be quick and easy to use, versatile, easy to replace and ideally should be cost effective.

The ideal workpiece clamping scenario reduces setup times and thus increases productivity. Only with excellent workpiece handling during clamping and flexible retrofitting of the Productivity elements can increase productivity by at least 30 percent, in individual cases up to 90 percent. Standardised solutions that are not only precisely tailored to an individual workpiece, but are versatile, also save on procurement and storage costs.

Trends in production?

Increasing machining of composite materials, light weight components, thin-walled and miniaturised components.

Smaller batch sizes through increasing customisation of work pieces.

Fully automated production processes and reliable process monitoring.

Automated workpiece processing.

Networking and unique identification of clamping technology components.

Implementation of sensor systems for data recording.

Loading and unloading in industrial applications is becoming increasingly automated. Productivity elements represents a decisive factor for process security.

Key Components: Typically consist of the following key components:

Clamping Mechanism: This part makes direct contact with the workpiece, applying force to hold it securely in place.

Force Generation Mechanism: Depending on the type of clamping method, the force may be generated through hydraulic, pneumatic, mechanical ways.

Mounting Base: The unit is often mounted onto a fixture or machine to ensure that the process is stable and consistent.

What is productivity elements ?

Precision: Clamping units are designed to hold objects in place with high accuracy, minimizing movement and ensuring that each process is performed with consistency.

Stability: Stability is critical in any manufacturing process to prevent misalignment, vibration, or displacement that could affect product quality or machine performance.

Durability: Given the harsh environments of industrial settings, clamping units are built to withstand high levels of stress, wear, and exposure to elements like heat and pressure.

Productivity elements are a vital part of industrial automation, enabling faster and safer production. Whether in a precise machining operation, the reliability of a clamping system directly impacts the overall quality and efficiency of production. Productivity elements ensures that every step of a manufacturing process is performed under optimal conditions, reducing the defects or accidents.

In summary, Productivity elements are an essential tool in modern manufacturing processes, responsible for securing parts in place with precision, strength, and reliability. These units vary based on the mechanism they use to generate clamping force and their applications across industries.

Productivity elements units come in various types, each designed to fulfill specific needs based on the application, load requirements, speed, and environmental conditions. Understanding the different types allows industries to choose the most efficient productivity elements for their operations.

Selection of Productivity elements

Each type of Productivity elements serves different operational needs, from high-force hydraulic system or quick-acting pneumatic system. The choice of a clamping unit depends on the specific requirements of the manufacturing process, including the materials used, the force required, and the level of automation desired and cost.

APPLICATIONS

MILLING

- High holding and pulling forces
- Reducing vibrations
- Low build in dimensions (height)
- Correct sizes for each application
- Suitable for CNC machining centres
- Can be integrated into machine tables.

INJECTION MOULDING

- High Holding and pulling forces
- Takes up the complete high forces
- Low build in dimensions (height)
- Suitable for vertical and horizontal machines
- Temperatures up to 80°C

TURNING

- High holding and pulling forces
- Reducing vibrations
- Low build in dimensions (height)
- Correct sizes for each application
- Suitable for turning machines tools
- Can be integrated into machine chuck.

GRINDING

- High positioning
- High repeatability
- Low build in dimensions
- Air operated preferable
- Suitable for automation
- Modules for automation available

ROBOTICS/AUTOMATION

- High positioning
- High repeatability
- Low build in dimensions
- Air operated preferable
- Suitable for automation

WELDING

- High positioning
- High repeatability
- Low build in dimensions
- Air operated preferable
- Suitable for automation

MEASURING

- High repeatability
- Easy to clean
- Can be installed into several material.

CNC ATTACHMENT

ROTATRY POLYGON BROACHING



Code No.	Wt. in Kg.	Length	Width	Height	Price
PO MT02 0100	1.12	40	40	160	3110
PO MT03 0100	3.30	50	50	200	4096
PO MT04 0100	5.00	65	65	250	5543
PO D016 0100	0.93	40	40	130	3402
PO D020 0100	2.29	50	50	140	4502
PO D030 0100	3.92	65	65	200	5136
PO EX02 0100	3.16	50	50	200	5851
PO EX20 0100	2.35	50	50	200	4559

FLOATING HOLDERS



Code No.	Wt. in Kg.	Length	Width	Height	Price
FR D016 0100	1.1	50	50	120	3157
FR D020 0100	2.0	50	50	120	4291
FR D025 0100	3.2	70	70	140	5951
FR D032 0100	4.8	100	100	140	6451
FR D040 0100	6.7	100	100	140	9042
FR MT02 0100	1.3	60	60	140	3533
FR MT03 0100	2.4	60	60	140	3374
FR MT04 0200	9.8	100	100	200	3533

FACE DRIVER & GEAR DRIVER



Code No.	Wt. in Kg.	Length	Width	Height	Price
FD MT02 0100	1.5	40	40	160	1630
FD MT03 0100	3.3	50	50	200	2654
FD MT04 0100	6.4	70	70	220	3397
FD MT05 0100	13.0	90	90	300	6163
FD GC63 0100	6.4	125	125	150	4413
FD GC80 0100	13.0	160	160	180	5451

SELF CENTRING HOLDER



Code No.	Wt. in Kg.	Length	Width	Height	Price
CT D020 0100	1.9	65	65	110	3982
CT D025 0100	3.0	65	65	120	4501
CT D032 0100	6.0	90	90	130	5282
CT MT02 0100	2.4	65	65	140	4132
CT MT03 0100	4.2	65	65	160	4845
CT MT04 0100	9.4	90	90	200	6136

SPECIAL HOLDERS



Code No.	Wt. in Kg.	Length	Width	Height	Price
MT D012 0100	0.1	20	20	80	988
CH D020 0100	1.8	50	50	120	3402
ER DH15 0100	2.5	90	90	120	6500

VERSATILE BURNISHING TOOLS



Code No.	Wt. in Kg.	Length	Width	Height	Price
BU BORE 0100	1.5	40	40	230	3604
BU BORE 0200	7.0	60	60	320	5351
BU EXTE 0100	9.4	60	140	180	5068
BU CONE 0100	6.9	70	90	160	5174

CLAMPING ELEMENTS

CLAMPING CYLINDER



Code No.	Wt. in Kg.	Length	Width	Height	Price
CC D050 0100	70	70	75	2.3	2450
CC D060 0100	85	85	90	4.1	3850
CC D070 0100	100	100	105	6.6	4600
CC D080 0100	115	115	120	10.0	5600
CC D100 0100	140	140	145	17.8	7960
CC D125 0100	175	175	180	34.6	12860
CC D150 0100	200	200	215	54.0	13200
CC D175 0100	245	245	250	94.2	18420

CLAMPING PISTON



Code No.	Wt. in Kg.	Length	Width	Height	Price
FR D016 0100	90	90	75	2.8	3220
FR D020 0100	90	90	90	4.9	3620
FR D025 0100	120	120	105	7.9	4500
FR D032 0100	120	120	120	12.0	5400
FR D040 0100	180	180	145	21.4	7856
FR MT02 0100	180	180	180	41.5	12893
FR MT03 0100	250	250	215	64.8	13214
FR MT04 0200	250	250	250	113.1	18417

POWER NUT - BLIND



Code No.	Wt. in Kg.	Length	Width	Height	Price
PP D060 0100	1.63	80	80	80	2525
PP D060 0200	1.63	80	80	80	2525
PP D075 0100	3.39	80	80	80	2545
PP D075 0200	3.39	80	80	80	2545
PP D100 0100	6.78	120	120	100	2841
PP D100 0200	6.78	120	120	100	2841
PP D120 0100	9.98	120	120	100	3099
PP D120 0200	9.98	120	120	100	3099

POWER NUT - THROUGH



Code No.	Wt. in Kg.	Length	Width	Height	Price
PI D075 0100	3.2	80	80	80	2544
PI D075 0200	3.2	80	80	80	2544
PI D075 0300	3.2	80	80	80	2544
PI D095 0100	5.0	100	100	80	3664
PI D095 0200	5.0	100	100	80	3664
PI D120 0100	10.6	130	130	100	4276
PI D120 0200	10.6	130	130	100	4276
PI D120 0300	10.6	130	130	100	4276

POWER SCREW



Code No.	Wt. in Kg.	Length	Width	Height	Price
PS M030 0100	0.406944	40	40	100	1257
PS M040 0100	1.0610688	40	40	100	1315
PS M060 0100	3.662496	80	80	160	2104
PS M080 0100	10.6589184	80	80	160	2946
PS M100 0100	19.9704	125	125	275	3249
PS M120 0100	29.84256	125	125	275	4866
PS M160 0100	64.4358144	175	175	350	9907
PS M200 0100	126.6048	225	225	450	14104

COLLET MANDREL



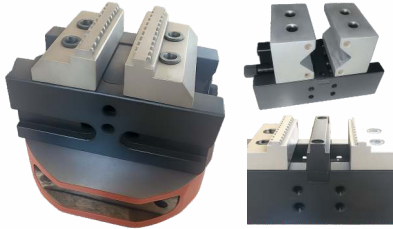
Code No.	Wt. in Kg.	Length	Width	Height	Price
MC D011 0100	0.35	40	40	90	2163
MC D014 0100	0.58	40	40	90	2740
MC D020 0100	1.27	50	50	120	3722
MC D026 0100	1.71	50	50	120	4600

COLLET CHUCK

CM ER25 0100	5.5	120	120	70	2790
CM ER32 0100	5.5	120	120	70	3080
CM ER40 0100	5.5	120	120	70	3430

PRODUCTION SYSTEMS

QUICK LOCK SYSTEM - VISE



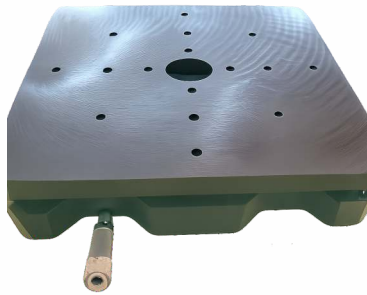
Code No.	Wt. in Kg.	Length	Width	Height	Price
VC W080 0100	6.4	150	80	80	6299
VC W080 0200	8.6	150	80	80	6655
VC W120 0100	25.4	240	120	100	10318
VC W120 0200	35.7	320	120	100	13795

QUICK LOCK SYSTEM - ER COLLET



Code No.	Wt. in Kg.	Length	Width	Height	Price
QL R052 0100	5.4	150	150	40	4357
QL R096 0100	7.2	150	150	40	7268
QL C052 0100	8.5	150	150	90	2701
QL C052 0200	9.3	150	150	100	2701
QL C052 0300	9.9	150	150	120	2701

ZERO POINT SYSTEM



Code No.	Wt. in Kg.	Length	Width	Height	Price
OZ 0016 0400	10.0	190	200	42	10016
OZ 0016 0500	12.8	215	225	42	10065
OZ 0032 0200	44.8	280	300	85	18569
OZ 0032 0300	61.7	330	350	85	20615

EASY LOCK SYSTEM



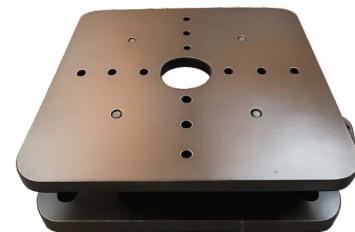
Code No.	Wt. in Kg.	Length	Width	Height	Price
EL D020 0300	24.9	260	310	50	9251
EL D020 0500	43.9	350	450	60	11995
EL D025 0500	78.8	400	550	65	21673
EL D020 0600	152.5	520	620	80	14983

MULTI JOB SYSTEM



Code No.	Wt. in Kg.	Length	Width	Height	Price
FX 0008 0100	6.5	350	50	70	6734
FX 0012 0100	9.8	400	70	90	8656
FX 0024 0100	12.6	450	80	110	9772

OM SYSTEM



Code No.	Wt. in Kg.	Length	Width	Height	Price
OM D021 0200	58.4	270	270	150	15193
OM D021 0300	84.1	320	320	150	16446
OM D021 0400	114.5	370	370	150	17911

PRECISION VISE

Adjustable Vise - Hydro-Mechanical



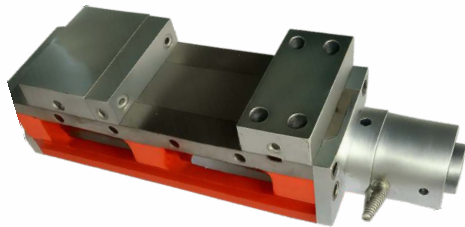
Code No.	Wt. in Kg.	Length	Width	Height	Price
VA W050 0100	6.1	200	50	100	2342
VA W100 0100	18.1	300	100	100	5797
VA W150 0100	45.2	400	150	120	12261
VA W200 0100	82.9	500	200	120	15069
VA W250 0100	124.3	600	250	120	21966
VA W300 0100	174.1	700	300	120	26903

Modular Jaw - Hydro-Mechanical



Code No.	Wt. in Kg.	Length	Width	Height	Price
VA W050 0100	6.0	200	50	100	1234
VA W100 0100	18.1	300	100	100	4721
VA W150 0100	45.2	400	150	120	9325
VA W200 0100	82.9	500	200	120	14042
VA W250 0100	124.3	600	250	120	14212
VA W300 0100	174.1	700	300	120	18202

Grip Down Vise - Hydro-Mechanical



Code No.	Wt. in Kg.	Length	Width	Height	Price
VU W100 0100	25.1	420	100	95	12203
VU W150 0100	79.2	580	150	145	22851
VU W200 0100	165.0	730	200	180	48234
VU W250 0100	234.6	830	250	180	63104
VU W300 0100	312.0	920	300	180	82567

5 Axis CNC Vise - Mechanical



Code No.	Wt. in Kg.	Length	Width	Height	Price
VC W080 0130	6.4	130	80	80	6299
VC W080 0170	8.6	170	80	80	6655
VC W120 0240	25.4	240	120	100	10318
VC W120 0320	35.7	320	120	100	13795

Self Centring Vise - Mechanical



Code No.	Wt. in Kg.	Length	Width	Height	Price
VC W050 0100	5	240	50	80	5078
VC W100 0100	26	380	100	100	7222
VC W150 0100	81	500	150	160	18347
VC W200 0100	162	600	200	200	35076
VC W250 0100	237	700	250	200	49451
VC W300 0100	326	800	300	200	62586

Wegde Vise - Mechanical



Code No.	Wt. in Kg.	Length	Width	Height	Price
VW W050 0100	6.1	250	50	75	24895
VW W050 0200	9.7	400	50	75	26450
VW W075 0100	21.7	400	75	115	27281
VW W075 0200	27.5	500	75	115	28700
VW W100 0100	42.4	500	100	135	30198
VW W100 0200	52.4	600	100	135	32600

SUPPORT ELEMENTS

LEVELLING JACKS



Code No.	Wt. in Kg.	Length	Width	Height	Price
LJ M012 0100	0.24	25	25	60	1180
LJ M016 0100	0.40	30	30	70	1480
LJ M020 0100	0.90	40	40	90	2100
LJ M024 0100	1.73	50	50	110	2300
LJ M030 0100	5.30	75	75	150	3585
LJ M039 0100	7.71	85	85	170	4557
LJ M048 0100	15.20	110	110	200	7881

SIDE SUPPORT JACKS



Code No.	Wt. in Kg.	Length	Width	Height	Price
SJ M012 0100	3.25	50	25	52	695
SJ M016 0100	4.38	60	28	70	1130
SJ M020 0100	5.00	80	50	80	1840
SJ M024 0100	6.56	100	65	105	2825
SJ M030 0100	8.13	120	70	130	2458
SJ M040 0100	10.94	150	100	175	5255
SJ M048 0100	13.13	180	105	210	7789

SELF ALIGN PAD



Code No.	Wt. in Kg.	Length	Width	Height	Price
AP M012 0100	0.089	21	21	32	460
AP M016 0100	0.165	25	25	42	590
AP M020 0100	0.342	33	33	50	690
AP M024 0100	0.603	40	40	60	885
AP M030 0100	1.274	52	52	75	1058

STRIP CLAMPS



Code No.	Wt. in Kg.	Length	Width	Height	Price
CS M012 0100	0.181	30	12	80	205
CS M016 0100	0.402	40	16	100	363
CS M020 0100	0.754	50	20	120	546
CS M024 0100	1.130	60	20	150	961
CS M030 0100	2.512	80	25	200	1072

SPECIAL STUD



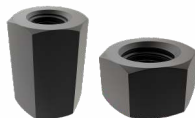
Code No.	Wt. in Kg.	Length	Width	Height	Price
SD M008 0100	0.03	08	08	80	307
SD M010 0100	0.06	10	10	100	413
SD M012 0100	0.11	12	12	125	538
SD M016 0100	0.26	16	16	160	673
SD M020 0100	0.40	20	20	160	486
SD M024 0100	1.09	24	24	300	577
SD M030 0100	1.70	30	30	300	745

T BOLT



Code No.	Wt. in Kg.	Length	Width	Height	Price
TB M008 0100	0.2	15	15	160	440
TB M010 0100	0.4	18	18	200	603
TB M012 0100	0.6	22	22	200	869
TB M016 0100	1.9	35	35	250	1990
TB M016 0100	2.5	40	40	250	2599
TB M016 0100	4.0	40	40	400	4062
TB M030 0100	7.6	55	55	400	5849

SPECIAL NUTS



Code No.	Wt. in Kg.	Length	Width	Height	Price
CN M008 0100	0.026533	13	13	25	29
CN M010 0100	0.0635222	17	17	35	38
CN M012 0100	0.0906832	19	19	40	47
CN M016 0100	0.1989504	24	24	55	60
CN M020 0100	0.36738	30	30	65	82
CN M024 0100	0.6511104	36	36	80	142
CN M030 0100	1.0048	40	40	100	227

T BOLT



Code No.	Wt. in Kg.	Length	Width	Height	Price
TN M008 0100	0.02	15	15	12	49
TN M010 0100	0.03	18	18	14	52
TN M012 0100	0.05	22	22	16	57
TN M016 0100	0.22	35	35	28	57
TN M020 0100	0.32	40	40	32	57
TN M024 0100	0.36	40	40	36	57
TN M030 0100	0.69	50	50	44	210

FUTURE PRODUCTS

ROATRY JOINTS



SWIVEL JOINTS



HYDRAULICS JACKS



HYDRAULIC CYLINDERS



SAFETY COUPLINGS



MECHANICAL TENSIONERS



LINEAR LOAD ACTUATOR



ROTARY ACTUATORS



Note : For your specific regular along with specific model sketch for replacement or requirment contact us.

NOTE PAGE



PRS VERSE

**Visit our website for
more information about
PRS VERSE**

www.prsverse.com



(+91) 982 205 6806
sales@prsverse.com



PRS VERSE

PRS Verse, Satara, Maharashtra - 415011